

Kultūros paveldo
departamentas

Šnipiškių cemetery and conversion of the Sports Palace into Congress centre

2015-04-02

Main historical dates

- Jewish cemetery is likely to have been built at the **end of the sixteenth century** in the then Fishermen suburbs in Šnipiškės;
- **1817:** Šnipiškių cemetery is officially closed, but the last deceased is buried here in 1831;
- **1831:** defensive fortifications of Vilnius fortress are erected in the central and southern part of Šnipiškių cemetery.
- **1878:** Vilnius fortress replaced by a southern military town;
- **About 1949:** complete liquidation of Šnipiškių cemetery. The territory, and the immediate surrounding area gets gradually built over with sports infrastructure.

Šnipiškės in 1808. Vilnius city plan

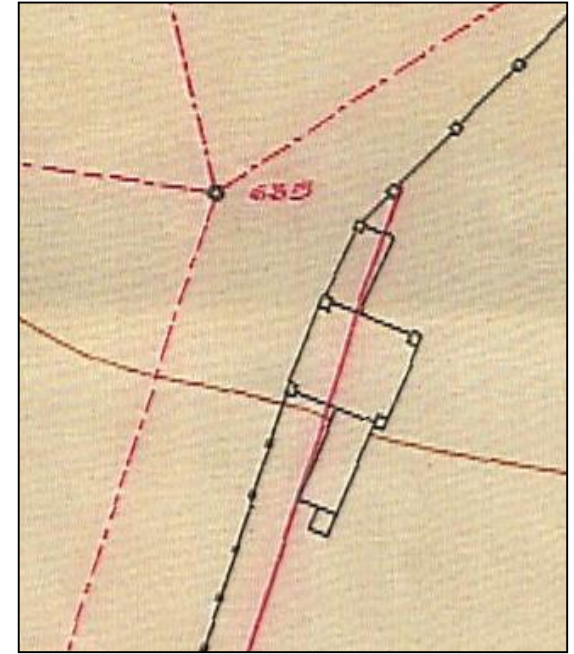
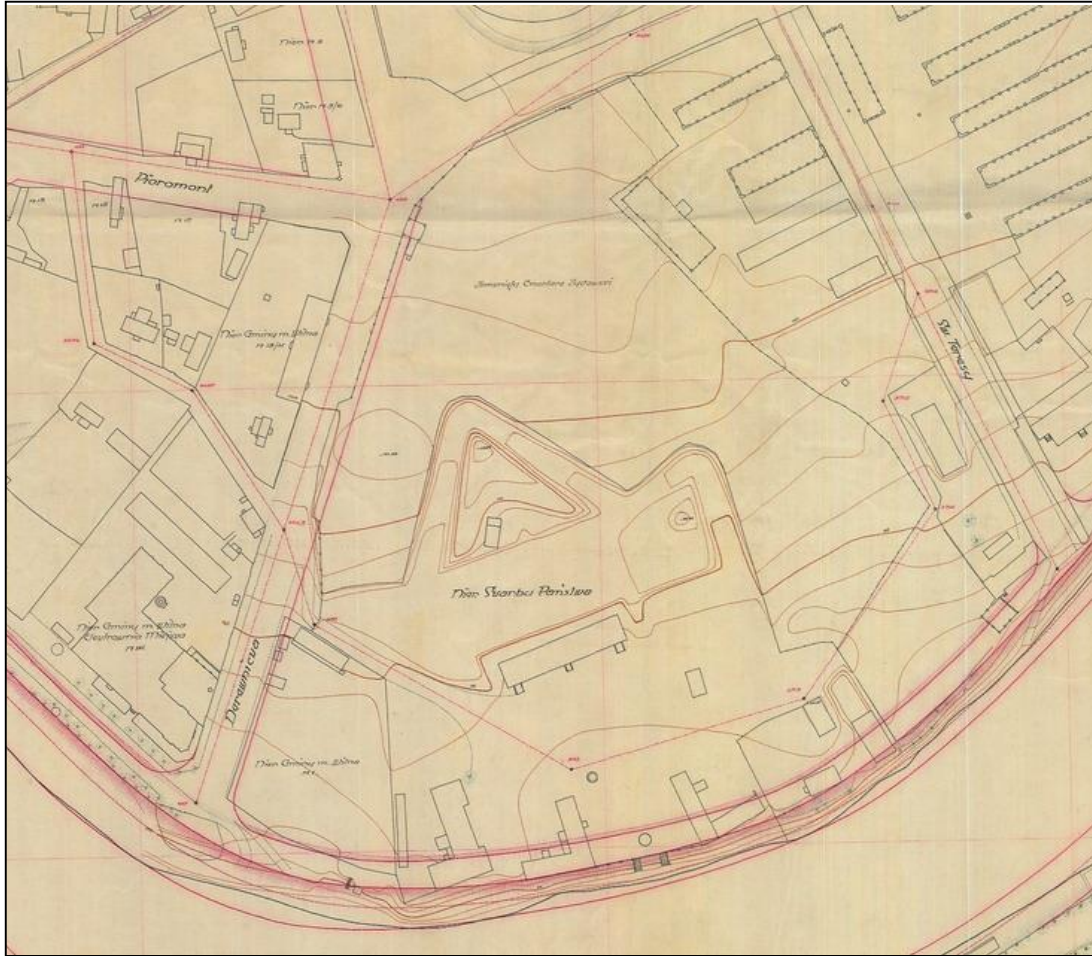


Šnipiškių cemetery in photographs, first half of 20 century



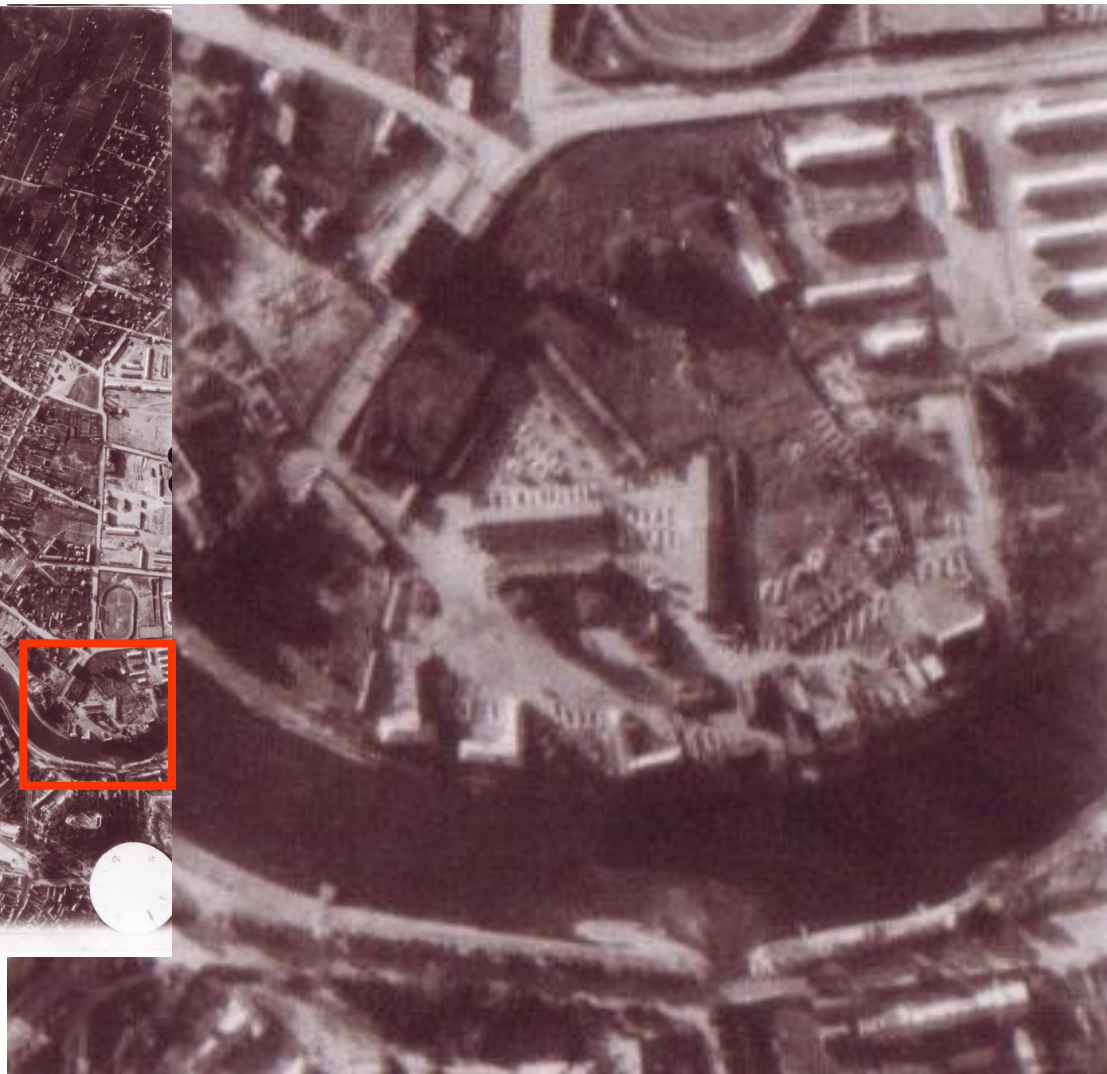
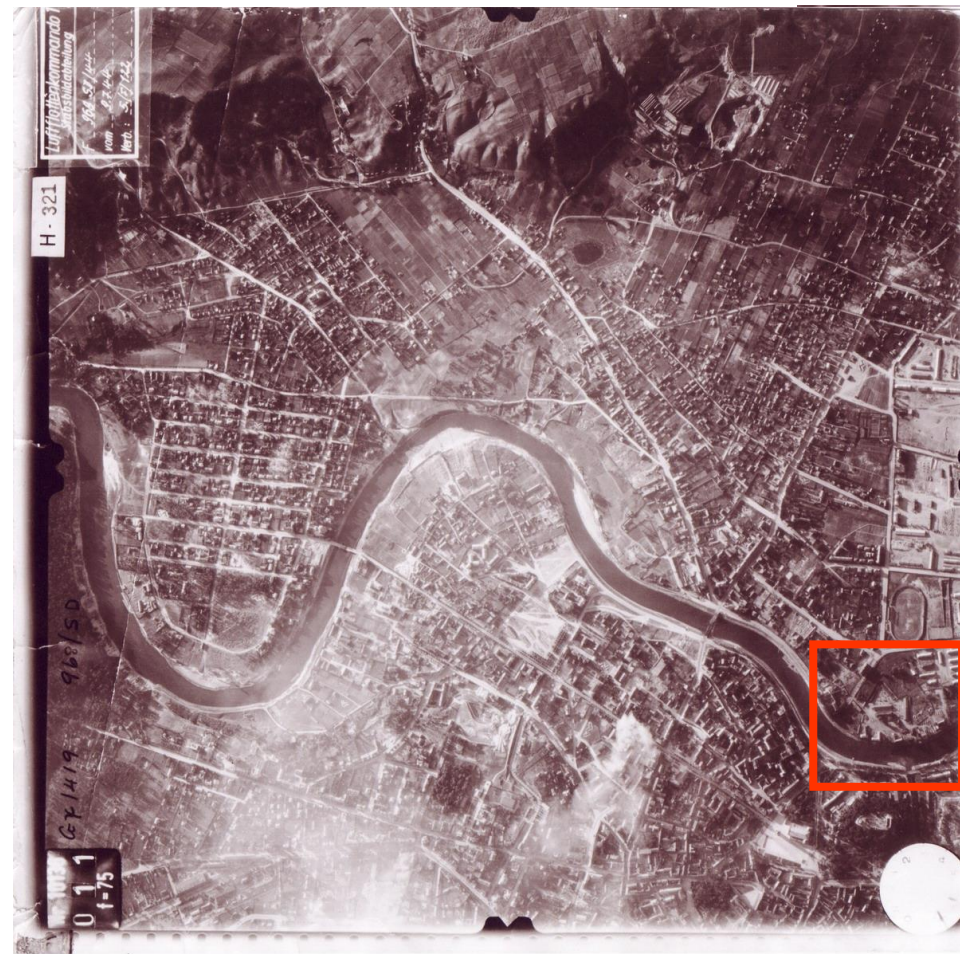
WILNO. Pomnik Adama Mickiewicza

Plan of the remains of Vilnius fortress and the cemetery (1933)



Vilnius city municipality keeps the largest scale plan dating back to the time before the Sports Palace. The plan of the scale 1: 1000 dates back to about 1933. This plan is the only source for the reconstruction of the relief before the Sports Palace. The plan is very accurate, its accuracy is testified by the marks of cemetery fence posts.

Šnipiškių cemetery in aerophotograph



Liquidation of Šnipiškis cemetery (1947-1949)

J E W I S H A N T I F A S C I S T C O M M I T T E E I N T H E U S S R

Moscow, ulitza Kropotkina 10

Еврейский Антифашистский
Комитет в СССР

6 ноября 1947 г.

Название
на еврейско
языке

г. Москва, улица Кропоткина № 10

Подлежит возврату
в особый сектор
ЦК КП/с/Литвы

Секретарю ЦК Коммунистической партии Литовской ССР

товарищу СНЕЧКУСУ

Еврейский Антифашистский Комитет в СССР получил телеграмму из
Нью-Йорка от Всемирного Еврейского Конгресса следующего содержания:

"Еврейские круги встревожены сообщением о том, что литовские
власти решили снести историческое еврейское кладбище в Вильно.

Исполнительный комитет X X
Вильнюсского Городского Совета
депутатов Трудящихся

Вильнюс, Гедимино 33 а тел. I-II и 47

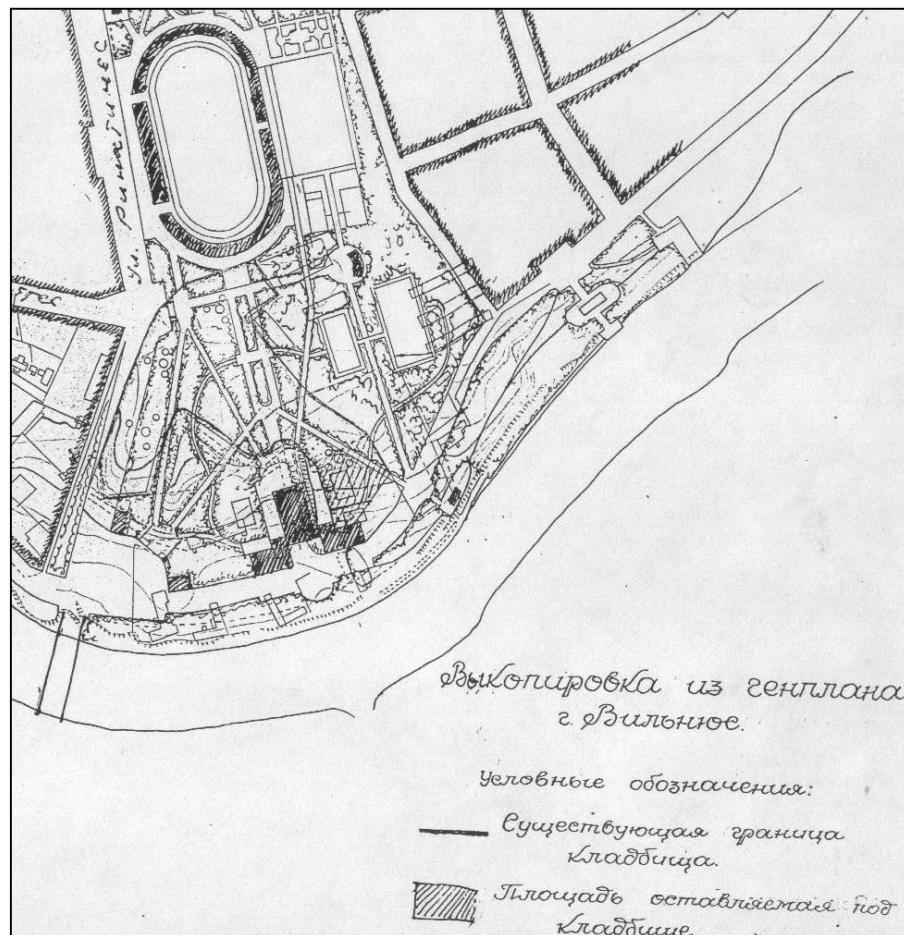
Вильнюс, 1948 м. январь мск.

Секретарю ЦК КП/с/ Литвы / /

тов. СНЕЧКУСУ

На Ваш запрос от 20-XI. 1947 г. за № 927

Вильнюсский Горисполком сообщает, что старое еврейское кладбище



2008: Šnipiškių cemetery was listed in the Register of Cultural Properties

VILNIAUS ŽYDŲ ŠNIPIŠKIŲ SENŲJŲ KAPINIŲ VIETA APIBRĖŽTŲ TERITORIJOS RIBŲ PLANAS Rinktinės g., Vilnius, Vilniaus m., Vilniaus aps.



M 1 : 5 000 (viename cm - 50 m)

Vertybės teritorijos ribų taškų koordinatės
1994 m. Lietuvos koordinatų sistemoje

Taško Nr	X(N)m	Y(E)m	Lapo nomenklatūra
1	6062557.0	583224.0	76/32
2	6062529.0	583245.0	
3	6062511.6	583232.7	
4	6062453.2	583252.6	
5	6062450.2	583237.3	
6	6062454.6	583236.2	
7	6062442.4	583185.7	
8	6062438.0	583186.8	
9	6062435.2	583175.4	
10	6062346.4	583196.8	
11	6062366.7	583280.9	
12	6062355.5	583263.8	
13	6062372.5	583228.7	
14	6062394.0	583325.1	
15	6062384.7	583286.4	
16	6062411.6	583280.3	
17	6062418.0	583309.0	
18	6062401.3	583332.3	

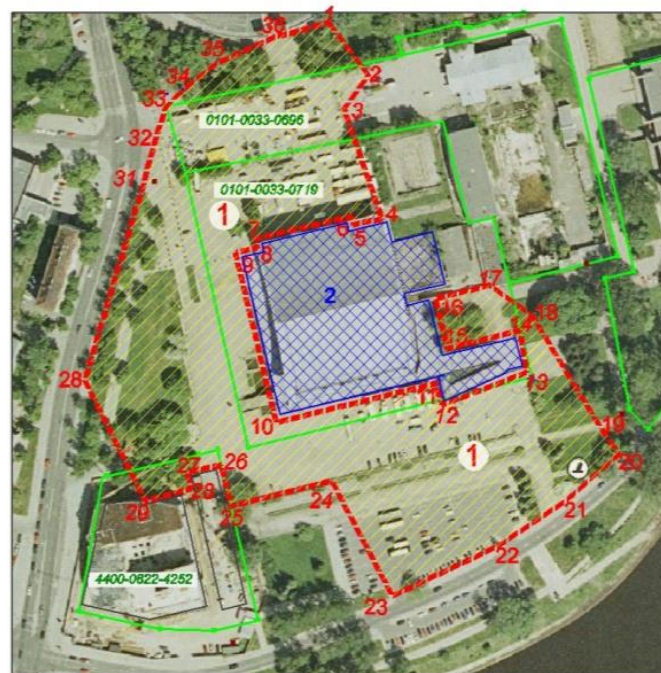
Sutartiniai ženklai:

- apibrėžtos vertybės teritorijos ribos
- suformuotų kadastrinių sklypų ribos

Taško Nr	X(N)m	Y(E)m	Lapo nomenklatūra
19	6062346.9	583365.6	76/32
20	6062329.4	583377.2	
21	6062303.9	583348.4	
22	6062279.9	583312.1	
23	6062254.0	583257.7	
24	6062314.9	583226.0	
25	6062301.6	583172.8	
26	6062323.7	583167.4	
27	6062319.4	583150.0	
28	6062311.0	583151.7	
29	6062304.5	583127.2	
30	6062368.0	583096.0	
31	6062471.5	583127.0	
32	6062489.9	583131.9	
33	6062512.3	583138.6	
34	6062521.3	583147.5	
35	6062535.0	583165.0	
36	6062549.0	583196.0	

 - nekilnojamojo kultūros paveldo objektas

- paminklas



M 1 : 2 000 (viename cm - 20 m)

Eksplikacija:

1. Vilniaus žydų Šnipiškių senųjų kapinių vieta

Teritorijos plotas.....3,52 ha

Kiti nekilnojamojo kultūros paveldo objektai:

2. Vilniaus koncertų ir sporto rūmai (MC17400)

Teritoriją nustatė:

Kultūros paveldo centro Duomenų skyriaus Vietų poskyrio
vyresnioji paminklotvarkinė Jolanta Paunkšienė

Planą sudarė:

Kultūros paveldo centro Duomenų skyriaus Statinių poskyrio
vyresnioji paminklotvarkinė Rimantas Žvirblis

Kultūros paveldo centro direktorius Virgilijus Kačinskas

2008.....

Key dates in heritage protection

- **2006-07-04:** The Sports Palace lists in the Register of Cultural Properties (a single facility of regional significance, of historical and architectural nature, not attributable to the category of state-protected heritage);
- **2007-09-27,** in response to an international outrage, proposals are made to amend protection provisions of Vilnius old town related to Šnipiškių cemetery;
- **2008-04-08** Šnipiškių cemetery listed in the Register of Cultural Properties as a cemetery (a single facility of regional significance, of memorial, historical and architectural nature);
- **2009-08-26** DCH and CPJCE conclude an Agreement on the Protection of Šnipiškių Cemetery, in the presence of representatives of the Lithuanian Jewish Community and Vice-ministers of Foreign Affairs and the Culture.
- **2009-09-09** confirmed detailed plan for the development of the territory (T-2 and T-3) between the Neris River and the streets of Rinktinės, Šeimyniškių, Raitininkų.
- **2010-02-19** confirmed special plan for Šnipiškių cemetery, with territorial and buffer zone demarcations;
- **2014-07-01** listing Šnipiškių cemetery among state-protected heritage, with two protection objectives: public awareness and use and public respect.

2009 Agreement with CPJCE

- Šnipiškų cemetery boundaries approved as defined by the DCH Evaluation Council back in 2008.
- The area of Mindaugo apartment centre was included in the buffer zone.
- It was agreed for the buffer zone of Šnipiškų cemetery to have three modes (A, B and C; so-called functional zones), which will be subject to different protection requirements.
- Main concepts and provisions were agreed on the modalities for certain activities in the territory of Šnipiškų cemetery and its buffer zone, to match the interests of the Jews, the state and the investors.

Functional zones “A” and “C”

- **It is prohibited to carry out earth-moving works in functional zones A and C, except the following cases:**
 - when it is related to the maintenance of existing engineering structures (underground services and roads) ;
 - when it is related to the Sports Palace maintenance.
- In order to carry out earth moving works related to the maintenance of the said buildings, consent must be obtained from the LJC and a minimum amount of work shall be carried out.
- All earth moving work must be carried out under the supervision of an archaeologist and designated representative of the LJC.

Functional zone “B”

- Earth-moving and construction works are allowed to be carried out in functional zone B but solely:
 - in the areas where no **essential human remains** have been discovered ;
 - appropriate engineering solutions have been identified for the protection of such remains.
- All earth-moving work must be carried out in this zone under the supervision of the archaeologist and the designated representative of the LJC.

Accident management and recovery

- Should an emergency occur in the building or engineering system, earth-moving work related to the elimination of any threats shall commence immediately either ***in the territory or the buffer zone*** of Šnipiškių cemetery and an LJC as well as the DCH must be informed without delay.
- After the arrival of an archaeologist and a designated representative of LJC at the place of the emergency, works related to the elimination of any threats shall be carried out in accordance with their requirements.

Thank you!

